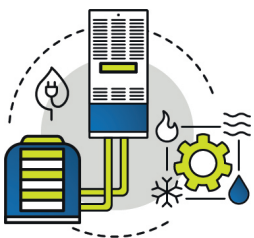


Blevins

BLEVINS INVITES YOU TO DISCOVER intertherm®

When you purchase an Intertherm product at Blevins, you'll find efficiency means more than just energy savings. The **RightFit** approach to matched HVAC equipment maximizes holistic operational efficiency across energy, space, cost, installation and service, and product compatibility. Providing the **RightMatch** and **RightFunction** for factory-built homes, all backed by the **RightFoundation**.



RightMatch

The Right Solutions for Integrated Systems

- Seamless **product compatibility** reduces risk of system failure and costly repairs.
- Consistent performance and **extended warranty coverage** on matched system equipment.
- **Sleek, modern design** enhances the home's aesthetic.



RightFunction

The Right Portfolio of Versatile Equipment

- **Tailored comfort** for unique living spaces.
- **Range of efficiencies** to cover all homeowners' needs.
- Full range of high-quality HVAC solutions including **oil, gas, and electric** options.



RightFoundation

The Right Legacy & Support

- **100+ years** of expertise in factory-built housing HVAC.
- **Market-leading**, top-quality, and long-lasting systems.
- **Peace of mind** with multiple warranty options.

For More Information, Contact Your Local Branch or Territory Manager Today!

www.BLEVINSINC.com

SCAN THE QR CODE to see what Blevins has to offer!

